

# Seating To Go



**Offices**  
**TO GO™**

A Division of Global - The Total Office

---

## Contents:

---

|                                           |           |
|-------------------------------------------|-----------|
| <b>Multi-Function</b>                     | <b>2</b>  |
| <b>Managerial</b>                         | <b>6</b>  |
| <b>Leather (Luxhide)</b>                  | <b>10</b> |
| <b>Mesh</b>                               | <b>24</b> |
| <b>Task</b>                               | <b>36</b> |
| <b>Stack &amp; Guest</b>                  | <b>40</b> |
| <b>Textiles</b>                           | <b>54</b> |
| <b>Index</b>                              | <b>56</b> |
| <b>Ergonomic Features</b>                 | <b>60</b> |
| <b>Wood Veneer &amp; Laminate Desking</b> | <b>62</b> |
| <b>Warranty</b>                           | <b>64</b> |

---

## Welcome to Offices To Go™

---

Offices To Go is proud to offer exceptional comfort and style while maintaining a value conscious approach to seating. Choose from MULTI-FUNCTION, TASK, MESH, MANAGERIAL, LEATHER (Luxhide) and STACK/GUEST seating to complete your office environment.

All Offices To Go chairs are manufactured exclusively in certified factories and have been tested to ensure compliance with all applicable industry standards. You can sit more comfortably knowing you have selected a quality product from Offices To Go!

Several Offices To Go chairs have scuff resistant arched molded bases with matching casters, impact resistant outer back shells, adjustable height arms and headrests.

All Offices To Go seating models come with easy to follow assembly instructions with detailed photographs. Product assembly is designed to be quick and simple, but if you need additional assistance, a customer service number is located on the bottom of each chair.

Enjoy your new Offices To Go seating!

---

## The Color Program

---

All Offices To Go fabric chairs are standard in QL10 Black patterned upholstery fabric. Most fabric chairs marked with a **I** icon are stocked in QL10 Black and QL11 Charcoal Grey and are also available, most at a nominal upcharge, in other fabrics and colors (see page 54-55). Offices to Go Luxhide\* chairs have soft Black Luxhide seating surfaces made

from bonded leather with matching mock leather trim. A select number of chairs are upholstered in genuine leather. Mesh chairs are featured and available exclusively in black.

All dimensions are shown in inches.

Descriptions, specifications and prices are subject to change without notice.

Errors and omissions are subject to correction. Color samples depicted in this brochure are as close to actual as modern printing processes will allow.

\* Luxhide is a bonded leather consisting of 15% leather fibers and 85% other materials.



---

## OTG11631B Adjustable Ergonomic Chair

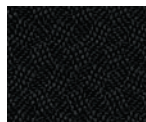
---

- Durable, patterned black fabric upholstery
- Pneumatic seat height adjustment
- Height adjustable armrests
- Seat and back angle adjustments
- Scuff resistant arched molded base with twin wheel carpet casters
- Height adjustable lumbar support
- Dimensions: 25"D x 25.5"W x 44"H
- Ergonomic Features: A, B, C, D, G, H, M, N, S



Shown in QL10 Black

Stocked Textile



QL10 Black





---

## OTG11613B Multi-Function Chair with Arms

---

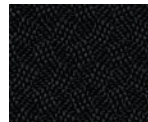
- Durable, patterned black fabric upholstery
- Pneumatic seat height adjustment
- Height adjustable armrests
- Infinite seat tilt lock with tilt tension adjustment
- Back angle adjustment
- Back height adjustment via internal ratchet
- Scuff resistant arched molded base with twin wheel carpet casters
- Dimensions: 24"D x 25.5"W x 39"H
- Ergonomic Features: A, B, C, D, G, H, M, N, S



Shown in QL10 Black



Stocked Textile



QL10 Black



## OTG11653 Multi-Function Chair with Arms

T



Shown in QL15 Marine (available at an upcharge)

- Stocked in durable, patterned black or charcoal grey fabric upholstery
- Pneumatic seat height adjustment
- Height adjustable armrests with pivot feature
- Infinite seat tilt lock with tilt tension adjustment
- Back angle adjustment
- Forward tilt control
- Scuff resistant arched molded base with twin wheel carpet casters
- Dimensions: 25"D x 26.5"W x 39"H
- Ergonomic Features: A, B, C, D, G, H, M, N, S

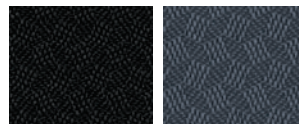


Shown in QL10 Black (stocked)



Shown in QL11 Charcoal Grey (stocked)

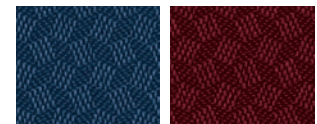
### Stocked Textiles



QL10 Black

QL11 Charcoal Grey

### Standard Textiles



QL14 Navy

QL16 Wine

T

In addition to the stocked textiles (QL10 Black and QL11 Charcoal Grey), this chair can be upholstered using any QUILT, PEBBLES, JENNY, TIME, SPRINKLE or SHARD fabric selections (see pages 54-55). An upcharge applies except for colors QL10 Black, QL11 Charcoal Grey, QL14 Navy and QL16 Wine.



## OTG11710 Multi-Function Chair with Arms

T



Shown in QL14 Navy (standard)

- Stocked in durable patterned black or charcoal grey fabric upholstery
- Pneumatic seat height adjustment
- Height and width adjustable arms
- Infinite seat tilt lock with tilt tension adjustment
- Back angle adjustment
- Back height adjustment via internal ratchet
- Forward tilt control
- Scuff resistant arched molded base with twin wheel carpet casters
- Dimensions: 24.5"D x 26"W x 42"H
- Ergonomic Features: A, B, C, D, G, H, M, N, Q, S

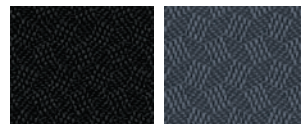


Shown in QL10 Black (stocked)



Shown in QL11 Charcoal Grey (stocked)

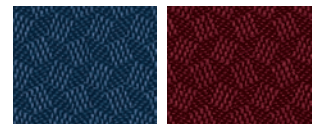
### Stocked Textiles



QL10 Black

QL11 Charcoal Grey

### Standard Textiles



QL14 Navy

QL16 Wine

T

In addition to the stocked textiles (QL10 Black and QL11 Charcoal Grey), this chair can be upholstered using any QUILT, PEBBLES, JENNY, TIME, SPRINKLE or SHARD fabric selections (see pages 54-55). An upcharge applies except for colors QL10 Black, QL11 Charcoal Grey, QL14 Navy and QL16 Wine.



---

## OTG11615B Tilter Chair with Arms

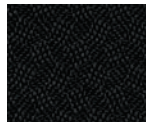
---

- Durable, patterned black fabric upholstery
- Pneumatic seat height adjustment
- Fixed height molded arms
- Single position tilt lock with tilt tension adjustment
- Scuff resistant arched molded base with twin wheel carpet casters
- Dimensions: 26.5"D x 24"W x 41"H
- Ergonomic Features: A, B, C, N, S



Shown in QL10 Black

Stocked Textile



QL10 Black



Luxhide version available OTG11616B.  
See page 11 for more information.





---

## OTG11612B Tilter Chair with Arms

---

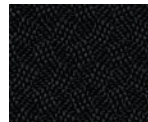
- Durable, patterned black fabric upholstery
- Pneumatic seat height adjustment
- Height adjustable armrests
- Single position tilt lock with tilt tension adjustment
- Fixed back angle
- Scuff resistant arched molded base with twin wheel carpet casters
- Dimensions: 26"D x 26"W x 36"H
- Ergonomic Features: A, B, C, H, M, N, S



Shown in QL10 Black



Stocked Textile



QL10 Black



## OTG11651 Tilter Chair with Arms

T



Shown in QL16 Wine (standard textile)

- Stocked in durable, patterned black or charcoal grey fabric upholstery
- Pneumatic seat height adjustment
- Height adjustable armrests
- Single position tilt lock with tilt tension adjustment
- Seat depth adjustment
- Scuff resistant arched molded base with twin wheel carpet casters
- Dimensions: 25"D x 24"W x 40"H
- Ergonomic Features: A, B, C, H, N, S

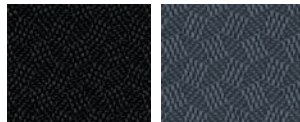


Shown in QL10 Black  
(stocked textile)



Shown in QL11 Charcoal Grey  
(stocked textile)

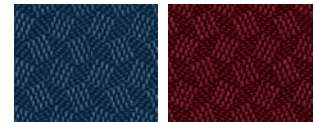
### Stocked Textiles



QL10 Black

QL11 Charcoal Grey

### Standard Textiles



QL14 Navy

QL16 Wine

T

In addition to the stocked textiles (QL10 Black and QL11 Charcoal Grey), this chair can be upholstered using any QUILT, PEBBLES, JENNY, TIME, SPRINKLE or SHARD fabric selections (see pages 54-55). An upcharge applies except for colors QL10 Black, QL11 Charcoal Grey, QL14 Navy and QL16 Wine.





## OTG11652 Tilter Chair with Arms

T



Shown in QL14 Navy (standard textile)

- Stocked in durable, patterned black or charcoal grey fabric upholstery
- Pneumatic seat height adjustment
- Height adjustable armrests
- Single position tilt lock with tilt tension adjustment
- Seat depth adjustment
- Scuff resistant arched molded base with twin wheel carpet casters
- Dimensions: 25.5"D x 26.5"W x 42.5"H
- Ergonomic Features: A, B, C, H, N, S

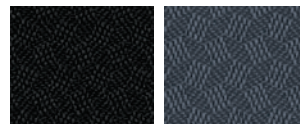


Shown in QL10 Black  
(stocked textile)



Shown in QL11 Charcoal Grey  
(stocked textile)

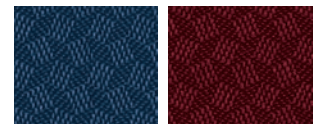
### Stocked Textiles



QL10 Black

QL11 Charcoal Grey

### Standard Textiles



QL14 Navy

QL16 Wine

T

In addition to the stocked textiles (QL10 Black and QL11 Charcoal Grey), this chair can be upholstered using any QUILT, PEBBLES, JENNY, TIME, SPRINKLE or SHARD fabric selections (see pages 54-55). An upcharge applies except for colors QL10 Black, QL11 Charcoal Grey, QL14 Navy and QL16 Wine.



---

**OTG11675B**  
**Luxhide\* Managers Chair**

---

T



- Attractive black Luxhide\* upholstery with mock leather trim
- Pneumatic seat height adjustment
- Comfortable upholstered arms
- Single position tilt lock with tilt tension adjustment
- Scuff resistant molded base with twin wheel carpet casters
- Dimensions: 28.5"D x 25"W x 43"H
- Ergonomic Features: A, B, C, N, S



Shown in Black Luxhide\*

Stocked Textile



Black Luxhide\*



T

\* Luxhide is a bonded leather consisting of 15% leather fibers and 85% other materials.

---

## OTG11616B Luxhide\* Managers Chair

---



- Attractive black Luxhide\* upholstery with mock leather trim
- Pneumatic seat height adjustment
- Fixed height molded arms
- Single position tilt lock with tilt tension adjustment
- Scuff resistant molded base with twin wheel carpet casters
- Dimensions: 26.5"D x 24"W x 41"H
- Ergonomic Features: A, B, C, N, S



Shown in Black Luxhide\*

Stocked Textile



Black Luxhide\*



Fabric version available OTG11615B.  
See page 6 for more information.



\* Luxhide is a bonded leather consisting of 15% leather fibers and 85% other materials.

---

**OTG11676B**  
**Luxhide\* Managers Chair**

---

T



- Attractive black Luxhide\* upholstery with mock leather trim
- Pneumatic seat height adjustment
- Impact resistant molded arms
- Single position tilt lock with tilt tension adjustment
- Scuff resistant molded base with twin wheel carpet casters
- Dimensions: 28.5"D x 25"W x 43"H
- Ergonomic Features: A, B, C, N, S



Shown in Black Luxhide\*

Stocked Textile



Black Luxhide\*



\* Luxhide is a bonded leather consisting of 15% leather fibers and 85% other materials.

---

**OTG11617B**  
**Luxhide\* Executive Chair**

---

T



- Attractive black Luxhide\* upholstery with mock leather trim
- Pneumatic seat height adjustment
- Fixed height molded arms with padded armrests
- Single position tilt lock with tilt tension adjustment
- Scuff resistant molded base with twin wheel carpet casters
- Dimensions: 27"D x 26"W x 42.5"H
- Ergonomic Features: A, B, C, N, S



Shown in Black Luxhide\*

Stocked Textile



Black Luxhide\*



\* Luxhide is a bonded leather consisting of 15% leather fibers and 85% other materials.



---

**OTG2788B**  
**Luxhide\* Executive Chair**

---

T



- Attractive black Luxhide\* upholstery with mock leather trim
- Pneumatic seat height adjustment
- Black molded arms with upholstered armcaps
- Single position tilt lock with tilt tension adjustment
- Scuff resistant arched molded base with twin wheel carpet casters
- Dimensions: 27.5"D x 25.5"W x 42"H
- Ergonomic Features: A, B, C, M, N, S



Shown in Black Luxhide\*

Stocked Textile



Black Luxhide\*



\* Luxhide is a bonded leather consisting of 15% leather fibers and 85% other materials.



---

## OTG11618B Luxhide\* Executive Chair

---

- Attractive black Luxhide\* upholstery with mock leather trim
- Pneumatic seat height adjustment
- Fixed height molded arms with padded armrests
- Single position tilt lock with tilt tension adjustment
- Integral headrest
- Scuff resistant molded base with twin wheel carpet casters
- Dimensions: 30"D x 25.5"W x 44.5"H
- Ergonomic Features: A, B, C, N, S



Shown in Black Luxhide\*

Stocked Textile



Black Luxhide\*



\* Luxhide is a bonded leather consisting of 15% leather fibers and 85% other materials.

---

**OTG2701B**  
**Luxhide\* Executive Chair**

---

T



- Mid back design
- Attractive black Luxhide\* upholstery with mock leather trim
- Pneumatic seat height adjustment
- Comfortable polyurethane "reverse curve" arms
- Single position tilt lock with tilt tension adjustment
- Scuff resistant arched molded base with twin wheel carpet casters
- Dimensions: 28"D x 27"W x 39"H
- Ergonomic Features: A, B, C, M, N, S



Shown in Black Luxhide\*

Stocked Textile



Black Luxhide\*



Coordinating guest chair available OTG2782B  
See page 23, 52 for more information.



T

---

**OTG2700B**  
**Luxhide\* Executive Chair**

---



- High back design
- Attractive black Luxhide\* upholstery with mock leather trim
- Pneumatic seat height adjustment
- Comfortable polyurethane "reverse curve" arms
- Single position tilt lock with tilt tension adjustment
- Scuff resistant arched molded base with twin wheel carpet casters
- Dimensions: 28"D x 27"W x 42"H
- Ergonomic Features: A, B, C, M, N, S



Shown in Black Luxhide\*

Stocked Textile



Black Luxhide\*



Coordinating guest chair available OTG2782B  
See page 23, 52 for more information.



\* Luxhide is a bonded leather consisting of 15% leather fibers and 85% other materials.

---

**OTG11633B**  
**Luxhide\* Executive Chair**

---



- Attractive black Luxhide\* seating surfaces with mock leather trim and decorative white stitch detail
- Pneumatic seat height adjustment
- Polished aluminum arms with upholstered armrests
- Single position tilt lock with tilt tension adjustment
- Polished aluminum base with scuff tips and twin wheel carpet casters
- Dimensions: 31"D x 26"W x 43"H
- Ergonomic Features: A, B, C, M, N, S



Shown in Black Luxhide\*

Stocked Textile



Black Luxhide\*



\* Luxhide is a bonded leather consisting of 15% leather fibers and 85% other materials.

---

**OTG2787B**  
**Luxhide\* Executive Chair**

---

T



- Attractive black Luxhide\* upholstery with mock leather trim
- Pneumatic seat height adjustment
- Attractive charcoal grey arms and base
- Fixed height molded arms with padded armrests
- Single position tilt lock with tilt tension adjustment
- Scuff resistant arched molded base with twin wheel carpet casters
- Dimensions: 28"D x 26.5"W x 44"H
- Ergonomic Features: A, B, C, M, N, S



Shown in Black Luxhide\*

Stocked Textile



Black Luxhide\*



\* Luxhide is a bonded leather consisting of 15% leather fibers and 85% other materials.

---

**OTG11671B**  
**Luxhide\* Executive Chair**

---

- Attractive black Luxhide\* upholstery with mock leather trim
- Pneumatic seat height adjustment
- Comfortable upholstered arms
- Segmented cushions on back and seat
- Distinctive and decorative top stitching on all seams
- Single position tilt lock with tilt tension adjustment
- Scuff resistant molded base with twin wheel carpet casters
- Dimensions: 29.5"D x 25.5"W x 46"H
- Ergonomic Features: A, B, C, M, N, S



Shown in Black Luxhide\*

Stocked Textile



Black Luxhide\*



\* Luxhide is a bonded leather consisting of 15% leather fibers and 85% other materials.



---

## OTG11648B Segmented Cushion Chair

---

- Attractive black Luxhide\* upholstery with mock leather trim
- Pneumatic seat height adjustment with single position tilt lock
- Chrome arms with upholstered armrests
- Swivel/tilt mechanism with tilt tension adjustment
- Chrome frame and base with twin wheel carpet casters
- Dimensions: 24.5"D x 24.5"W x 41"H
- Ergonomic Features: A, B, C, M, N, S



Shown in Black Luxhide\*

Stocked Textile



Black Luxhide\*



\* Luxhide is a bonded leather consisting of 15% leather fibers and 85% other materials.

---

**OTG11649B**  
**Luxhide\* Executive Chair**

---

- Attractive black Luxhide\* upholstery with mock leather trim
- Pneumatic seat height adjustment with single position tilt lock
- Polished aluminum arms with upholstered armrests
- Tilt mechanism with tilt tension adjustment
- Polished aluminum base with scuff tips and twin wheel carpet casters
- Dimensions: 28.5"D x 28"W x 45.5"H
- Ergonomic Features: A, B, C, M, N, S



Shown in Black Luxhide\*

Stocked Textile



Black Luxhide\*



\* Luxhide is a bonded leather consisting of 15% leather fibers and 85% other materials.



OTG2782B Shown in Black Luxhide\*

---

**OTG2782B**  
**Luxhide\* Guest Chair**

---



- Mid back design with soft black Luxhide\* upholstery and mock leather trim
- Attractive sled base design
- Upholstered armrests
- Black epoxy powder coated steel frame
- Dimensions: 25.5"D x 24.5"W x 36.5"H



OTG3915B Shown in Black Luxhide\*

---

**OTG3915B**  
**Luxhide\* Guest Chair**

---

- Attractive, soft black Luxhide\* upholstery with mock leather trim
- Upholstered armrests
- Black epoxy powder coated steel frame
- Dimensions: 27"D x 24.5"W x 33.5"H

Stocked Textile



Black Luxhide\*



\* Luxhide is a bonded leather consisting of 15% leather fibers and 85% other materials.

---

## OTG11642B Mesh Back Task Chair - Armless

---



- Soft mesh back with breathable mesh fabric seat
- Pneumatic seat height adjustment
- Armless design – height adjustable arms are available
- Swivel task mechanism
- Scuff resistant arched molded base with twin wheel carpet casters
- Dimensions: 20"D x 19"W x 37"H
- Ergonomic Features: C, M, N

Stocked Textiles



Black Mesh



Shown in Black Mesh



---

## OTG11620 Adjustable Height Arm Kit

---

- Soft urethane height adjustable armrest in black finish
- Kit includes height adjustable arms and all necessary hardware
- Designed exclusively for use on OTG11611B, OTG11642B and OTG11643B models
- Dimensions: 10"D x 3"W x 12"H



---

## OTG11647B Mesh Back Chair

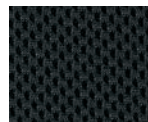
---

- Soft mesh back with breathable mesh fabric seat
- Pneumatic seat height adjustment
- Height adjustable arms
- Synchro tilt chair control with tilt tension adjustment
- Single position tilt lock
- Scuff resistant arched molded base with twin wheel carpet casters
- Dimensions: 22"D x 24.5"W x 37"H
- Ergonomic Features: A, B, C, H, L, M, N



Shown in Black Mesh

Stocked Textile



Black Mesh







---

## OTG11641B Mesh Back Managers Chair

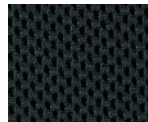
---

- Soft mesh back with breathable mesh fabric seat
- Pneumatic seat height adjustment
- Height adjustable arms
- Synchro tilt chair control with tilt tension adjustment
- Single position tilt lock
- Scuff resistant arched molded base with twin wheel carpet casters
- Dimensions: 23"D x 25"W x 43"H
- Ergonomic Features: A, B, C, H, L, M, N



Shown in Black Mesh

Stocked Textile



Black Mesh







---

## OTG11657B Mesh Back Managers Chair

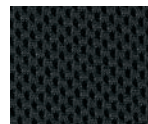
---

- Attractive, supportive breathable black mesh back and mesh fabric seat
- Pneumatic seat height adjustment
- Highly polished chrome arms with padded armrests (armrests can be removed at user's discretion to achieve a fully polished look)
- Single position tilt lock with tilt tension adjustment
- Polished aluminum base with twin wheel carpet casters
- Dimensions: 23.5"D x 24"W x 41"H
- Ergonomic Features: A, B, C, M, N, S



Shown in Black Mesh

Stocked Textile



Black Mesh





**OTG11692B**  
**Luxhide\* Adjustable Mesh Back**  
**Ergonomic Chair**



- Attractive, supportive breathable black mesh back with mock leather surround and perforated Luxhide\* seat
- Pneumatic seat height adjustment
- Height adjustable arms
- Single position tilt lock with tilt tension adjustment
- Seat depth adjustment
- Scuff resistant arched molded base with twin wheel carpet casters
- Dimensions: 25"D x 24.5"W x 38"H
- Ergonomic Features: A, B, C, H, M, N, S



Shown in Black Mesh and Black Luxhide\*

Stocked Textile



Black Mesh

Black Luxhide\*



\* Luxhide is a bonded leather consisting of 15% leather fibers and 85% other materials.

---

**OTG11686B**  
**Mesh Back Managers Chair**

---

T

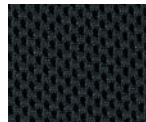


- Attractive, soft black mesh fabric with breathable mesh fabric seat
- Pneumatic seat height adjustment
- Height adjustable arms with polyurethane armrests
- Attractive titanium finish accents
- Synchro-tilt chair control with infinite position tilt lock
- Black scuff resistant tips on chair base with twin wheel carpet casters
- Dimensions: 24.5"D x 25.5"W x 36.5"H
- Ergonomic Features: A, B, C, H, M, N, S



Shown in Black Mesh

Stocked Textile (seat only)



Black Mesh

T

In addition to the stocked textile (Black Mesh), the seat of this chair can be upholstered using any QUILT, PEBBLES, JENNY, TIME, SPRINKLE or SHARD fabric selections (see pages 54-55). An upcharge applies. **Available soon. Contact your local sales representative for more information.**





## OTG11677B Mesh Back Luxhide\* Executive Chair



- Attractive, supportive breathable black mesh back with mock leather surround and perforated Luxhide\* seat
- Pneumatic seat height adjustment
- Height adjustable arms
- Single position tilt lock with tilt tension adjustment
- Seat depth adjustment
- Fixed back angle
- High back style
- Scuff resistant high rise molded base with twin wheel carpet casters
- Dimensions: 25"D x 25"W x 46"H
- Ergonomic Features: A, B, C, H, M, N, S



Shown in Black Mesh and Black Luxhide\*

### Stocked Textiles



Black Mesh

Black Luxhide\*



\* Luxhide is a bonded leather consisting of 15% leather fibers and 85% other materials.



---

## OTG11646B Mesh Back Managers Chair

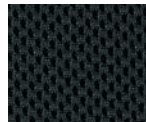
---

- Attractive, supportive, breathable mesh back and mesh fabric seat
- Pneumatic seat height adjustment
- Height adjustable arms
- Synchro-tilt chair control with tilt tension adjustment
- Single position tilt lock
- Scuff resistant high rise molded base with twin wheel carpet casters
- Dimensions: 22.5"D x 24.25"W x 39"H
- Ergonomic Features: A, B, C, H, L, M, N



Shown in Black Mesh

Stocked Textile



Black Mesh





---

## OTG11691B Mesh Executive Chair

---

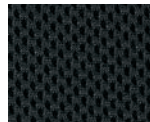


- Soft mesh fabric back with breathable mesh fabric seat
- Pneumatic seat height adjustment
- Height adjustable arms with polyurethane armrests
- Attractive titanium finish
- Synchro knee tilt chair control with multi-position tilt lock
- Twin wheel carpet caster
- Adjustable lumbar support
- Black scuff resistant tips on chair base
- Dimensions: 25"D x 26"W x 41.5"H
- Ergonomic Features: A, B, C, H, L, M, N



Shown in Black Mesh

Stocked Textile



Black Mesh





---

## OTG11690B Mesh Executive Chair

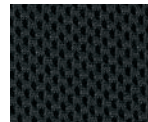
---

- Soft mesh fabric back with breathable mesh fabric seat
- Pneumatic seat height adjustment
- Height adjustable arms with polyurethane armrests
- Integral headrest with pivot and up and down adjustment
- Attractive titanium finish
- Synchro knee tilt chair control with multi-position tilt lock
- Twin wheel carpet caster
- Adjustable lumbar support
- Black scuff resistant tips on chair base
- Dimensions: 25"D x 26"W x 47"H
- Ergonomic Features: A, B, C, H, L, M, N



Shown in Black Mesh

Stocked Textile



Black Mesh



---

## OTG11668B Mesh Executive Chair

---

- Attractive, supportive breathable black mesh back with mesh fabric seat
- Pneumatic seat height adjustment with adjustable lumbar support
- Height and width adjustable arms with slide and pivot feature
- Synchro knee tilt chair control with multi-position tilt lock and seat slider
- Synchro tilt control with multi-position tilt lock and tilt tension adjustment
- Scuff resistant arched molded base with twin wheel carpet casters
- Dimensions: 24.5"D x 27"W x 43"H
- Ergonomic Features: A, B, C, E, H, L, M, N, Q, R

Stocked Textile



Black Mesh



Shown in Black Mesh



Shown with Optional Headrest



---

## OTG11669 Mesh Executive Chair Headrest

---

- Chair headrest for model OTG11668B
- Headrest is adjustable for both angle and height
- Dimensions: 6.5"D x 12.5"W x 11"H





Offices To Go model OTG11668B provides a high degree of comfort and adjustability. The seat is manufactured with resilient high density foam padding that allows the user to remain comfortable throughout the work day. The mesh back allows air to freely move through it enhancing the comfort. There is an adjustable lumbar support that moves in and out as well as up and down. The chair adjusts for different size users through the pneumatic seat height adjustment and the seat slider which allows the seat to be moved forward or rearward to achieve the perfect amount of support for shorter or taller people.

The chair arms are fully adjustable. A button on the side of each arm allows the arms to move up and down. The arm caps rotate inward and can slide forward as well, helping to provide great support when keyboarding. The arms are even width adjustable, meaning that with the OTG11668B a user can position the arms and armrests exactly where they will provide the greatest comfort and support. All of these features allow the chair to be truly customized to the size and preferences of the user.

All OTG models, including this one, are tested in advance of coming to market, and also tested during and after production to make sure that they meet applicable industry standards, such as ANSI-BIFMA. We want to make sure the purchaser is happy with OTG seating now and in the future. As a result, OTG chairs are great investments both now and over their lifetime.



**Width Adjustable Arms** can be slid in or out by 1.5" allowing the arm rests to be positioned exactly where the user wants them. Simply move the lever forward to release movement of the sliding arm.



**Height Adjustable Arms** allow the user to position the arm caps exactly where they need to be. The arm height is easily changed through the use of a button under the outside edge of the arm cap.



**Depth Adjustable Arms** slide forward and rearward allowing the arm caps to be optimally located. They are constructed from a soft polyurethane material which provides comfort AND durability.



**Pivot Adjustable Arms** swivel to the left and right to face toward a keyboard or mouse. Rotating the arm caps so they aim where needed may help to reduce Repetitive Strain Injuries (RSI's).

**A**

**The Built-in Lumbar support** can be adjusted up and down. Its sliding action allows the user to position the lumbar support at the most comfortable and supportive position. Simply grip the adjustment tabs and move the support to the optimal location.

**B**

**The Built-in Lumbar support** is also adjustable in and out. This feature allows the user to "dial in" the exact amount of support desired. The amount of support is easy to adjust and change if desired. Simply grip the control arms and slide them forward to the desired position that is right for you.



---

## OTG11610B Armless Task Chair

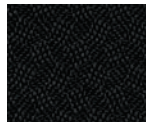
---

- Durable, patterned black fabric upholstery
- Pneumatic seat height adjustment
- Thick, soft cushions for comfort
- Seat depth adjustment
- Scuff resistant molded base with twin wheel carpet casters
- Dimensions: 20"D x 19.5"W x 33"H
- Ergonomic Features: C, E, M, N



Shown in QL10 Black

Stocked Textile



QL10 Black



\* Luxhide is a bonded leather consisting of 15% leather fibers and 85% other materials.



---

**OTG11655B**  
**Armless Task Chair**

---

T



- Attractive, black Leather pieced upholstery with mock leather trim
- Pneumatic seat height adjustment
- Thick, soft cushions for comfort
- Seat depth adjustment
- Hinged back
- Scuff resistant molded base with twin wheel carpet casters
- Dimensions: 22.5"D x 19"W x 34"H
- Ergonomic Features: C, E, M, N



Shown in Black Leather

Stocked Textile



Black Leather



## OTG11650 Armless Task Chair

T



Shown in QL16 Wine (standard textile)

- Stocked in durable, textured black or charcoal grey fabric upholstery
- Pneumatic seat height adjustment
- Seat depth adjustment
- Scuff resistant arched molded base with twin wheel carpet casters
- Dimensions: 25"D x 21"W x 38"H
- Ergonomic Features: C, E, M, N

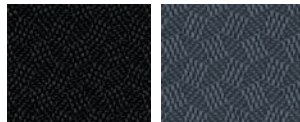


Shown in QL10 Black (stocked textile)



Shown in QL11 Charcoal Grey (stocked textile)

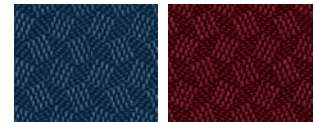
### Stocked Textiles



QL10 Black

QL11 Charcoal Grey

### Standard Textiles



QL14 Navy

QL16 Wine

T

In addition to the stocked textiles (QL10 Black and QL11 Charcoal Grey), this chair can be upholstered using any QUILT, PEBBLES, JENNY, TIME, SPRINKLE or SHARD fabric selections (see pages 54-55). An upcharge applies except for colors QL10 Black, QL11 Charcoal Grey, QL14 Navy and QL16 Wine.





---

## OTG11611B Armless Task Chair

---

- Durable, textured black fabric upholstery
- Pneumatic seat height adjustment
- Seat depth adjustment
- Scuff resistant arched molded base with twin wheel carpet casters
- Dimensions: 25"D x 20"W x 36.5"H
- Ergonomic Features: C, E, M, N

Stocked Textile



QL10 Black



Shown in QL10 Black



---

## OTG11620 Adjustable Height Arm Kit

---

- Soft, urethane height adjustable armrest in black finish
- Kit includes height adjustable arms and all necessary hardware
- Designed exclusively for use on OTG11611B, OTG11642B and OTG11643B models
- Dimensions: 10"D x 3"W x 12"H

---

**OTG11694**  
**Armless Stack Chair**

---

T



Shown in 70 Black Vinyl

- Durable, black vinyl upholstery
- Square upholstery tube chrome frame
- Black tube inserts
- Can be stacked 10 high
- 2 chairs per carton (priced each)
- Bulk packaging is also available. Please consult your sales representative.
- Dolly available OTG11695 - List Price \$105.
- Dimensions: 22"D x 19"W x 33"H



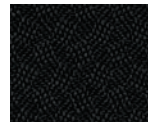
Shown with optional dolly OTG11695

Stocked Textile



70 Black Vinyl

Available Textile



QL10 Black



T

---

**OTG11693**  
**Stack Chair with Arms**

---

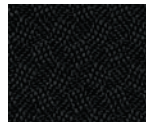


- Durable, patterned black fabric upholstery
- Square upholstery tube chrome frame
- Black tube inserts
- Black molded armrests
- Can be stacked 10 high
- 2 chairs per carton (priced each)
- Bulk packaging is also available. Please consult your sales representative.
- Dolly available OTG11695 - List Price \$105.
- Dimensions: 22"D x 21"W x 33"H



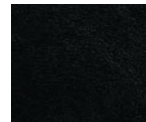
Shown in QL10 Black

Stocked Textile



QL10 Black

Available Textile



70 Black Vinyl





**OTG11934  
Stack Chair**



Shown in QL15 Marine (available at an upcharge)

- Stocked in durable, patterned black or charcoal grey fabric upholstery
- Black epoxy powder coated frame
- Floor and stacking bumpers included
- Can be stacked 10 high
- 2 Chairs per carton (priced each)
- Bulk packaging may be available. Please consult your sales representative.
- Dolly available OTG11705 - List Price \$105.
- Dimensions: 22.5"D x 17.5"W x 33.5"H

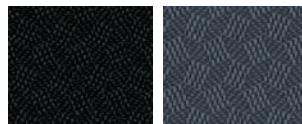


Shown in QL10 Black (stocked)



Shown in QL11 Charcoal Grey (stocked)

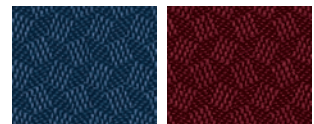
Stocked Textiles



QL10 Black

QL11 Charcoal Grey

Standard Textiles



QL14 Navy

QL16 Wine



70 Black Vinyl

In addition to the stocked textiles (QL10 Black and QL11 Charcoal Grey), this chair can be upholstered using any QUILT, PEBBLES, JENNY, TIME, SPRINKLE or SHARD fabric selections (see pages 54-55). An upcharge applies except for colors QL10 Black, QL11 Charcoal Grey, QL14 Navy, QL16 Wine and 70 Black Vinyl.



**OTG11696 / OTG11697**  
**Stack Chair / Armless Stack Chair**



OTG11696 Shown in QL16 Wine (standard textile)

- Stocked in durable, patterned black or charcoal grey fabric upholstery
- Tubular chrome frame
- Arm chair (OTG11696) has Black molded armrests
- Arm chair (OTG11696) can be stacked 10 high with or without dolly while armless chair (OTG11697) stacks to 15 high on optional dolly or 13 high without dolly
- 2 chairs per carton (priced each)
- Bulk packaging is also available. Please consult your sales representative.
- Dolly available OTG11698 - List Price \$225.
- Dimensions (OTG11696): 23.5"D x 22.5"W x 30"H
- Dimensions (OTG11697): 23.5"D x 18.5"W x 30"H



OTG11696 Shown in QL10 Black (stocked textile)

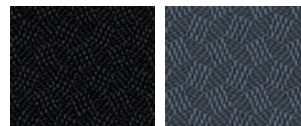


OTG11696 Shown in QL11 Charcoal Grey (stocked textile)



OTG11697 Shown in QL14 Navy (standard) with optional dolly OTG11698

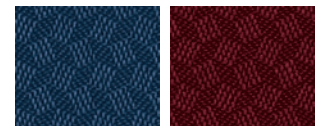
Stocked Textiles



QL10 Black

QL11 Charcoal Grey

Standard Textiles



QL14 Navy

QL16 Wine



In addition to the stocked textiles (QL10 Black and QL11 Charcoal Grey), this chair can be upholstered using any QUILT, PEBBLES, JENNY, TIME, SPRINKLE or SHARD fabric selections (see pages 54-55). An upcharge applies except for colors QL10 Black, QL11 Charcoal Grey, QL14 Navy and QL16 Wine.



**OTG11702**  
**Armless Stack Chair**



- Stocked in durable, patterned black or charcoal grey fabric upholstery
- Black epoxy powder coated square-tube frame
- Can be stacked up to 10 high
- 2 chairs per carton (priced each)
- Bulk packaging is also available. Please consult your sales representative.
- Dolly available OTG11705 - List Price \$105.
- Dimensions: 23"D x 18"W x 35"H



Shown in QL16 Wine (standard textile)

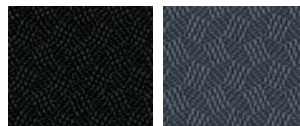


Shown in QL10 Black (stocked textile) with optional dolly OTG705



Shown in QL11 Charcoal Grey (stocked textile)

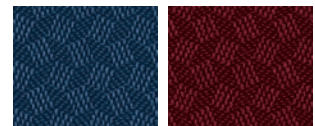
Stocked Textiles



QL10 Black

QL11 Charcoal Grey

Standard Textiles



QL14 Navy

QL16 Wine



In addition to the stocked textiles (QL10 Black and QL11 Charcoal Grey), this chair can be upholstered using any QUILT, PEBBLES, JENNY, TIME, SPRINKLE or SHARD fabric selections (see pages 54-55). An upcharge applies except for colors QL10 Black, QL11 Charcoal Grey, QL14 Navy and QL16 Wine.



---

**OTG11699 / OTG11700**  
**Stack Chair / Armless Stack Chair**

---



- Impact resistant black plastic seat & back
- Chrome steel frame
- Can be stacked 8 high
- 2 chairs per carton (priced each)
- Bulk packaging is also available. Please consult your sales representative.
- Dolly available OTG11701 - List Price \$155.
- Dimensions (OTG11699): 22.5"D x 26"W x 31"H
- Dimensions (OTG11700): 22.5"D x 22"W x 31"H



OTG11699 Shown in BK Black (stocked)



OTG11699 Shown in BK Black (stocked)



OTG11700 Shown in BK Black (stocked)

Stocked Color



BK Black



---

**OTG2748**  
**Armless Stack Chair**

---

T

- Stocked in durable, patterned black or charcoal grey fabric upholstery
- Black epoxy powder coated frame
- Can be stacked 5 high on the floor or 5 high on available dolly OTG2749
- 1 chair per carton
- Dimensions: 22.5"D x 19.5"W x 32"H



Shown in QL16 Wine (standard textile)

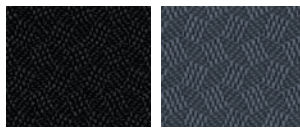


Shown in QL10 Black (stocked textile)



Shown in QL11 Charcoal Grey (stocked textile)

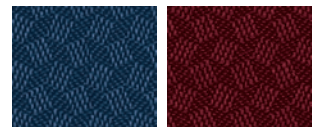
Stocked Textiles



QL10 Black

QL11 Charcoal Grey

Standard Textiles



QL14 Navy

QL16 Wine

T

In addition to the stocked textiles (QL10 Black and QL11 Charcoal Grey), this chair can be upholstered using any QUILT, PEBBLES, JENNY, TIME, SPRINKLE or SHARD fabric selections (see pages 54-55). An upcharge applies except for colors QL10 Black, QL11 Charcoal Grey, QL14 Navy and QL16 Wine.





**OTG2747**  
**Stack Chair with Arms**



- Stocked in durable, patterned black or charcoal grey fabric upholstery
- Black epoxy powder coated frame
- Black molded arms
- Can be stacked 5 high on the floor or 5 high on available dolly OTG2749
- 1 chair per carton
- Dimensions: 22.5"D x 23"W x 32"H



Shown in QL16 Wine (standard textile)

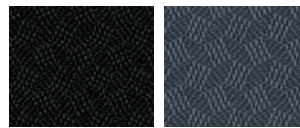


Shown in QL10 Black (stocked textile)



Shown in QL11 Charcoal Grey (stocked textile)

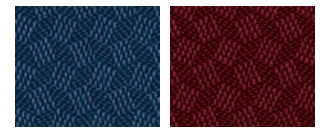
Stocked Textiles



QL10 Black

QL11 Charcoal Grey

Standard Textiles



QL14 Navy

QL16 Wine



In addition to the stocked textiles (QL10 Black and QL11 Charcoal Grey), this chair can be upholstered using any QUILT, PEBBLES, JENNY, TIME, SPRINKLE or SHARD fabric selections (see pages 54-55). An upcharge applies except for colors QL10 Black, QL11 Charcoal Grey, QL14 Navy and QL16 Wine.



**OTG11703 / OTG11704**  
**Stack Chair / Armless Stack Chair**



- Stocked in durable, patterned black or charcoal grey fabric upholstery
- Black epoxy powder coated frame
- Can be stacked up to 8 high on optional dolly
- 2 chairs per carton (priced each)
- Bulk packaging is also available. Please consult your sales representative.
- Dolly available OTG11706 - List Price \$145.
- Dimensions (OTG11703): 23"D x 21.5"W x 30.5"H
- Dimensions (OTG11704): 23"D x 21.5"W x 30.5"H



OTG11703 Shown in QL14 Navy (Standard textile)



OTG11703 Shown in QL14 Navy (Standard textile)

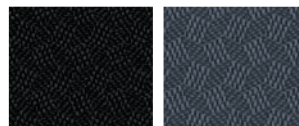


OTG11703 Shown in QL16 Wine (Standard textile)



OTG11704 Shown in QL10 Black (stocked textile) with optional dolly OTG11706

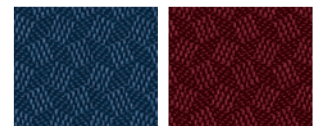
Stocked Textiles



QL10 Black

QL10 Charcoal Grey

Standard Textiles



QL14 Navy

QL16 Wine



In addition to the stocked textiles (QL10 Black and QL11 Charcoal Grey), this chair can be upholstered using any QUILT, PEBBLES, JENNY, TIME, SPRINKLE or SHARD fabric selections (see pages 54-55). An upcharge applies except for colors QL10 Black, QL11 Charcoal Grey, QL14 Navy and QL16 Wine.





Shown in Black Mesh

---

## OTG11643B Mesh Guest Chair

---

- Attractive, supportive breathable black mesh back and mesh fabric seat
- Cantilever base
- Dimensions: 22"D x 19"W x 38"H

Stocked Textile



Black Mesh



---

## OTG11620 Adjustable Height Arm Kit

---

- Soft, urethane height adjustable armrest in black finish
- Kit includes height adjustable arms and all necessary hardware
- Designed exclusively for use on OTG11611B, OTG11642B and OTG11643B models
- Dimensions: 10"D x 3"W x 12"H

**OTG11720**  
**Occasional Chair with Arms**

T

- Stocked in durable, patterned black or charcoal grey fabric upholstery
- Black epoxy powder coated frame
- Black molded frame
- Does not stack
- 1 chair per carton
- Dimensions: 23.75"D x 22.5"W x 34.5"H



Shown in QL14 Navy (standard textile)

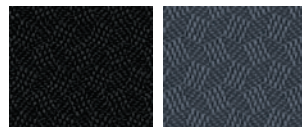


Shown in QL10 Black (stocked textile)



Shown in QL11 Charcoal Grey (stocked textile)

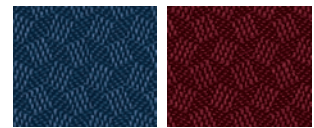
Stocked Textiles



QL10 Black

QL11 Charcoal Grey

Standard Textiles



QL14 Navy

QL16 Wine

T

In addition to the stocked textiles (QL10 Black and QL11 Charcoal Grey), this chair can be upholstered using any QUILT, PEBBLES, JENNY, TIME, SPRINKLE or SHARD fabric selections (see pages 54-55). An upcharge applies except for colors QL10 Black, QL11 Charcoal Grey, QL14 Navy and QL16 Wine.



---

## OTG3915B Luxhide\* Guest Chair

---

- Attractive, soft black Luxhide\* upholstery with mock leather trim
- Upholstered armrests
- Black epoxy powder coated steel frame
- Dimensions: 27"D x 24.5"W x 33.5"H



Stocked Textile



Black Luxhide\*



OTG3915B Shown in Black Luxhide\*

---

## OTG3916B Luxhide\* Guest Chair

---

- Attractive, soft black Luxhide\* upholstery with mock leather trim
- Upholstered armrests
- Black epoxy powder coated sled base
- Available by special order as part of future container shipments.
- Dimensions: 27"D x 24.5"W x 33.5"H



OTG3916B Shown in Black Luxhide\*

\* Luxhide is a bonded leather consisting of 15% leather fibers and 85% other materials.



---

**OTG2782B**  
**Luxhide\* Guest Chair**

---

T

- Mid back design with soft black Luxhide\* upholstery and mock leather trim
- Attractive sled base design
- Upholstered armrests
- Designed to coordinate with OTG2700B and OTG27001B
- Dimensions: 25.5"D x 24.5"W x 36.5"H



Shown in Black Luxhide\*

Stocked Textile



Black Luxhide\*



\* Luxhide is a bonded leather consisting of 15% leather fibers and 85% other materials.

---

**OTG2700B / OTG2701B**  
**Luxhide\* Executive Chairs**

---

T



OTG2700B Shown in Black Luxhide\*

- High back design (OTG2700B)
- Mid back design (OTG2701B)
- Attractive black Luxhide\* upholstery with mock leather trim
- Pneumatic seat height adjustment
- Comfortable polyurethane "reverse curve" arms
- Single position tilt lock with tilt tension adjustment
- Scuff resistant arched molded base with twin wheel carpet casters
- Designed to coordinate with OTG2782B
- Dimensions (OTG2700B): 28"D x 27"W x 42"H
- Dimensions (OTG2701B): 28"D x 27"W x 39"H
- Ergonomic Features: A, B, C, M, N, S



OTG2701B Shown in Black Luxhide\*



OTG2701B Shown in Black Luxhide\*

Stocked Textile



Black Luxhide\*



In addition to the stocked textiles (QL10 Black and QL11 Charcoal Grey) on most fabric **T** chairs, most can be upholstered using any of the fabric selections shown below. A list upcharge applies except for colors QL10 Black, QL11 Charcoal Grey, QL14 Navy and QL16 Wine (and 70 Black Vinyl on selected chairs).

### QUILT 100% Polyester



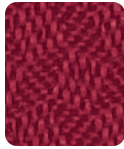
QL10



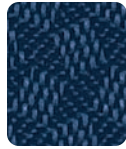
QL11



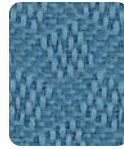
QL12



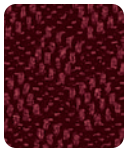
QL13



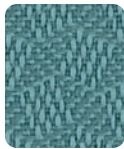
QL14



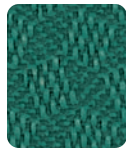
QL15



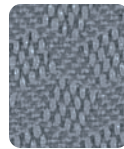
QL16



QL17



QL18



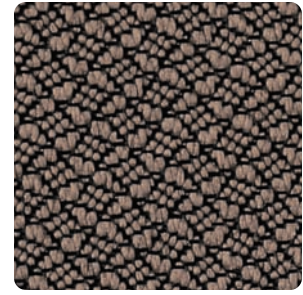
QL19

QL10 Black (stocked on all fabric chairs), QL11 Charcoal (stocked on many fabric chairs), QL12 Violet, QL13 Poppy, QL14 Navy (standard on many fabric chairs), QL15 Marine, QL16 Wine (standard on many fabric chairs), QL17 Mint, QL18 Forest, QL19 Silver

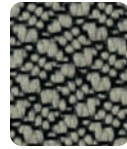
### PEBBLES 100% Polypropylene



PB01



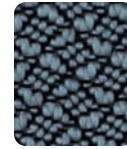
PB02



PB03



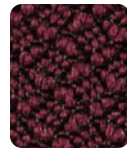
PB04



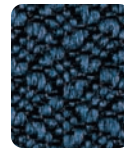
PB05



PB06



PB07



PB08



PB09

PB01 Clay, PB02 Fawn, PB03 Sea Side, PB04 Stone, PB05 Marine, PB06 Atrium, PB07 Rhapsody, PB08 Ocean, PB09 Asphalt

### JENNY 100% Polyester



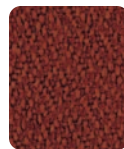
JN01



JN02



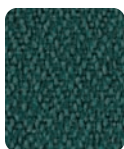
JN03



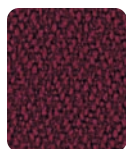
JN04



JN05



JN06



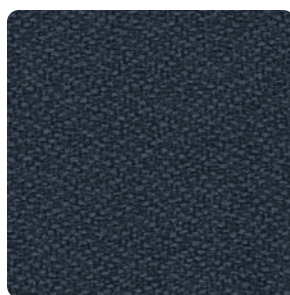
JN07



JN08



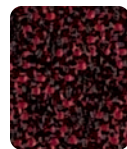
JN09



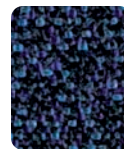
JN11

JN01 Midnite, JN02 Ebony, JN03 Slate, JN04 Russet, JN05 Canyon, JN06 Teal, JN07 Vermilion, JN08 Admiral, JN09 Spruce, JN11 Charcoal

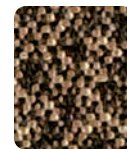
### SPRINKLE 68% Olefin, 32% Polyester



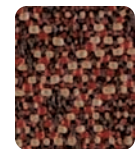
S101



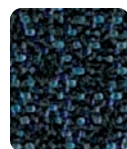
S102



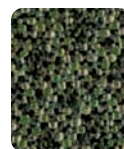
S103



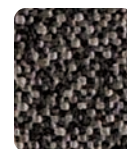
S104



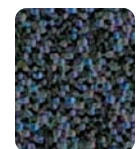
S106



S107



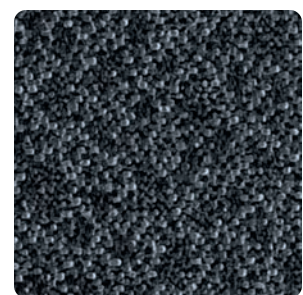
S108



S109



S110

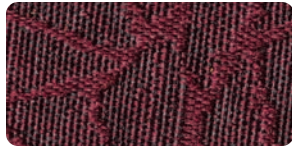


S111

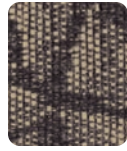
S101 Cabernet, S102 Plum, S103 Barley, S104 Copper, S106 Sapphire, S107 Jade, S108 Stone, S109 Cobalt, S110 Black, S111 Graphite



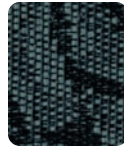
**SHARD** 62% Polyester, 38% Olefin



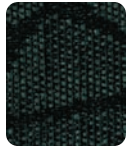
SH11



SH12



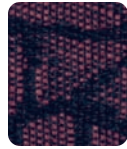
SH13



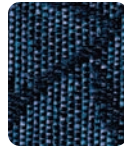
SH14



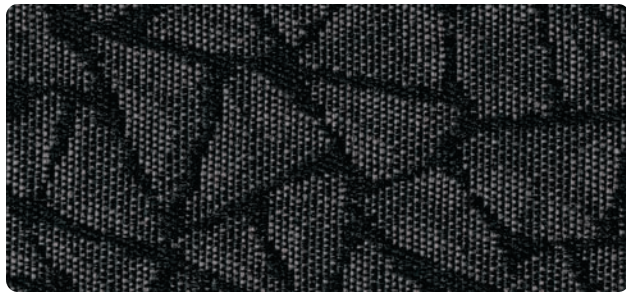
SH15



SH16



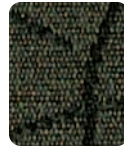
SH17



SH18

SH11 Garnet, SH12 Bullion, SH13 Lagoon, SH14 Cypress, SH15 Java, SH16 Tempest, SH17 Arctic, SH18 Carbon

**TIME** 54% Polyester, 46% Polypropylene



T601



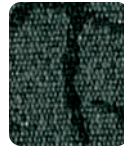
T602



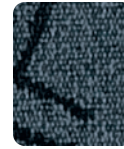
T603



T604



T605



T606



T607



T608



T609



T610

T601 Leaf, T602 Picante, T603 Bamboo, T604 Fudge, T605 Aqua, T606 Sky, T607 Atmosphere, T608 Bordeaux, T609 Steel, T610 Midnight

**LUXHIDE<sup>®</sup>, VINYL, MESH**



Luxhide<sup>®</sup>



Mesh



Vinyl

\* Luxhide is a bonded leather consisting of 15% leather fibers and 85% other materials.

**CARE & CLEANING**

**Fabrics:** To extend the life of your seating upholstered in fabric, regularly dust the chair to prevent airborne particles from penetrating the fabric surface. For light soiling, use a damp cloth and blot the spot with very slight pressure, taking care never to soak the fabric. Dry with a clean cloth by blotting - never rub fabric. More intense stains can be treated the same way, but with a mild detergent.

**Luxhide<sup>®</sup>:** For regular cleaning, simply use a soft, damp cloth, taking care not to soak the Luxhide. For more thorough treatment, soak a soft cloth in mild soap solution and wipe surface in a light circular motion. Repeat with clean water. Allow to dry and polish with a soft dry cloth. Do not use detergents, aerosol sprays or other polishes.

Always test fabric first in an unseen area before using any cleaning method.

Seating textiles shown are for reference only. While color consistency and quality are controlled to the highest standards, color may vary from samples shown.

For actual finish samples, please contact your local sales representative.

---

**Multi-Function Seating**



List Price \$340



**OTG11631B** Page 2



**OTG11653** Page 4



**OTG11710** Page 5

---

**Managerial Seating**



**OTG11615B** Page 6, 11



**OTG11612B** Page 7



**OTG11651** Page 8



**OTG11652** Page 9

---

**Luxhide Seating**



**OTG11675B** Page 10



**OTG11616B** Page 6, 11



**OTG11676B** Page 12



**OTG11617B** Page 13

---

**Luxhide Seating**



**OTG2788B** Page 14



**OTG11618B** Page 15



**OTG2701B** Page 16, 53



**OTG2700B** Page 17, 53



---

**Luxhide Seating**



**OTG11633B** Page 18



**OTG2787B** Page 19



**OTG11671B** Page 20



**OTG11648B** Page 21

---

**Luxhide Seating**



**OTG11649B** Page 22

---

**Mesh Seating**



**OTG11642B** Page 24



**OTG11647B** Page 25



**OTG11657B** Page 27



**OTG11641B** Page 26

---

**Mesh Seating**



**OTG11692B** Page 28



**OTG11686B** Page 29



**OTG11677B** Page 30



**OTG11646B** Page 31

---

**Mesh Seating**



**OTG11691B** Page 32



**OTG11690B** Page 33



**OTG11668B** Pages 34-35

---

**Task Seating**



**OTG11610B** Page 36



**OTG11655B** Page 37



**OTG11650** Page 38



**OTG11611B** Page 39

---

**Stack & Guest Seating**



**OTG11694** Page 40



**OTG11693** Page 41



**OTG11934** Page 42



**OTG11697** Page 43

---

**Stack & Guest Seating**



**OTG11696** Page 43



**OTG2748** Page 46



**OTG11700** Page 45



**OTG11702** Page 44

---

**Stack & Guest Seating**



**OTG11699** Page 45  
T



**OTG11704** Page 48  
T



**OTG11703** Page 48  
T



**OTG2747** Page 47  
T

---

**Stack & Guest Seating**



**OTG11643B** Page 49



**OTG11720** Page 50  
T



**OTG3915B** Page 23, 51



**OTG3916B\*** Page 51

---

**Stack & Guest Seating**



**OTG2782B** Page 16, 17, 23, 52  
T

\* Available by special order as part of future container shipments.



---

## Ergonomic Features

---

Maximizing your Ergonomic Seating:

Every Offices To Go chair is built with features that are ergonomically designed to promote good posture and provide maximum comfort. While fully supporting your body, these features should also allow you to adjust your chair to fit you.

Always select a chair that is designed for the type of work you perform and make certain the chair is comfortable for the length of time spent using it. Ensure that the seat and back cushions are contoured to fit your body, which will help eliminate pressure points. An ergonomically designed chair should allow changing postures easily.

As you work, reposition yourself throughout the day to reduce strain and stress on specific muscle groups. If you change job functions, adjust your chair to fit the new task.

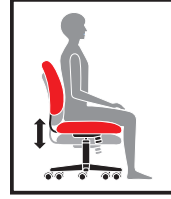
Proper ergonomic seating should help eliminate many of the work related injuries that result from poor posture and poorly designed chairs.



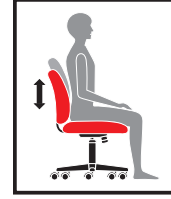
**A**  
**TENSION ADJUSTMENT**  
 Increase or decrease to match body weight. Allows you to rock comfortably, without heavy pushing, reducing muscle fatigue.



**B**  
**CHAIR TILT LOCK**  
 Lock the tilt movement in position(s) to accommodate your working posture. Allows you to lock your chair in a comfortable and supportive position. (Can be either single position or infinite style.)



**C**  
**SEAT HEIGHT**  
 Raise or lower to allow your feet to rest flat on the floor. Avoids pressure under your thighs, easing blood flow.



**D**  
**BACK HEIGHT**  
 Raise or lower to position lumbar support in your lumbar area. Reduces likelihood of back pain.



**E**  
**SEAT DEPTH**  
 Change the depth of the seat to accommodate the length of your thighs. Keeps your back in contact with the backrest while avoiding pressure behind your knees.



**G**  
**BACK ANGLE**  
 Adjust to change the angle of your torso in relation to your thighs. Helps reduce disc pressure and relaxes your back muscles.



**H**  
**ARM HEIGHT**  
 Adjust to support your forearms. Reduces muscular effort in neck and shoulders, minimizing risk of pain.



**L**  
**SYNCHRO-TILT MOVEMENT**  
 Backrest reclines at a faster rate than the seat, increasing the angle between your torso and thighs. Enhances comfort and encourages dynamic body movement.



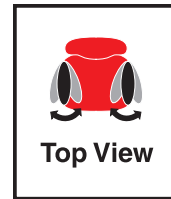
**M**  
**WATERFALL SEAT EDGE**  
 Reduces pressure at the back of the knee, contributing to good blood flow.



**N**  
**PROPERLY CONTOURED CUSHIONS**  
 Support the body effectively, allowing you to sit longer without discomfort.



**Q**  
**WIDTH ADJUSTABLE ARMS**  
 Allows outward movement of armrests to match shoulder breadth. Ensures armrests properly support forearms, reducing muscular effort in neck and shoulders.



**R**  
**ARM ROTATION**  
 Rotate armcap to support your forearm in various positions. Reduces muscular effort in neck and shoulders, minimizing risk of pain.



**S**  
**CENTER-TILT MOVEMENT**  
 Chair tilts from a pivot point under the center of the seat allowing you to rock. When your feet are well supported, blood flow is enhanced.



# Offices To Go Wood Veneer & Superior Laminate Desking

## Wood Veneer Desking - Ventnor and Margate

- Hand selected veneers accented with solid wood fluted edges (Ventnor) or solid wood radius edges (Margate)
- Finished in a rich satin gloss Cordovan or Toffee (Ventnor only) finish
- Worksurfaces feature a nine step finishing process with a Polyester top coat finish
- Drawer interiors are constructed of a multi-ply wood veneer
- Metal brackets are included for additional strength and rigidity.

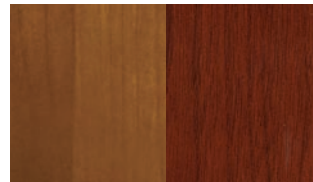


Ventnor Shown in Toffee Wood Veneer (TCH)



Margate Shown in Cordovan Wood Veneer (CQI)

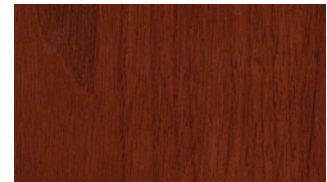
Ventnor Finishes



Toffee (TCH)

Cordovan (CCH)

Margate Finish



Cordovan (CQI)

**Handles**



Satin Nickel handles are standard on all filing and storage components.

**Grommets**



Grommets are standard on desks, returns, bridges, credenzas, extended corners and hutches.

**Margate Edge**



Solid wood radius edges finished in a rich satin gloss Cordovan finish.

**Ventnor Edge**



Solid wood fluted edges finished in either a rich satin gloss Toffee (shown) or Cordovan finish.

**completes any office environment and within any budget.**

---

### **Superior Laminate Desking**

---

- Matching 3mm PVC "Super Edge" on all edges
- Top quality full extension ball bearing slides on file drawers.
- Grommets are standard on desks, returns, bridges, credenzas, extended corners and hutches
- Standard with 6 1/2" handles



Shown in American Cherry (ACL)

Shown in American Dark Cherry (ADC)

#### **Laminate Edge Details and Finishes**



American Mahogany (AML)



American Cherry (ACL)



American Dark Cherry (ADC)

#### **Grommets**



Grommets are standard on desks, returns, bridges, credenzas, extended corners and hutches.

---

## Seating To Go Warranty

---

Offices to Go warrants its products to be free from defects in material and workmanship subject to the limitations below. This warranty is made by Offices to Go only to original end user customers acquiring the product directly from authorized Offices to Go dealers. The customer's sole remedy under this warranty is limited to repair or replacement at Offices to Go's option. Consent from Offices to Go must be obtained before any warranty work is performed. This warranty shall not apply to any products which must be replaced due to normal wear and tear, negligence, abuse or "accident", shipping damage or product use other than in accordance with written instructions or warnings. It will also not apply when product has been modified or altered, repaired or refurbished by someone other than Offices to Go. This warranty does not cover the cost of transportation or labor. Offices to Go can make no warranty that any of its products are suitable for any particular purpose and can make no other warranties, expressed or implied. In no event shall Offices to Go be liable in either tort or contract for any loss or direct, special, incidental, consequential or exemplary damages.

This warranty is not valid if the products are used for rental purposes.

Under this warranty, claims must be made within the following periods from the original date of purchase: (a) non-moving parts are warranted for five years; (b) gas cylinders, mechanisms and other moving parts are warranted for two years; and (c) upholstery materials and foam are warranted for two years.

Warranty is based on an eight hour, single shift work day for users weighing up to 250 pounds.

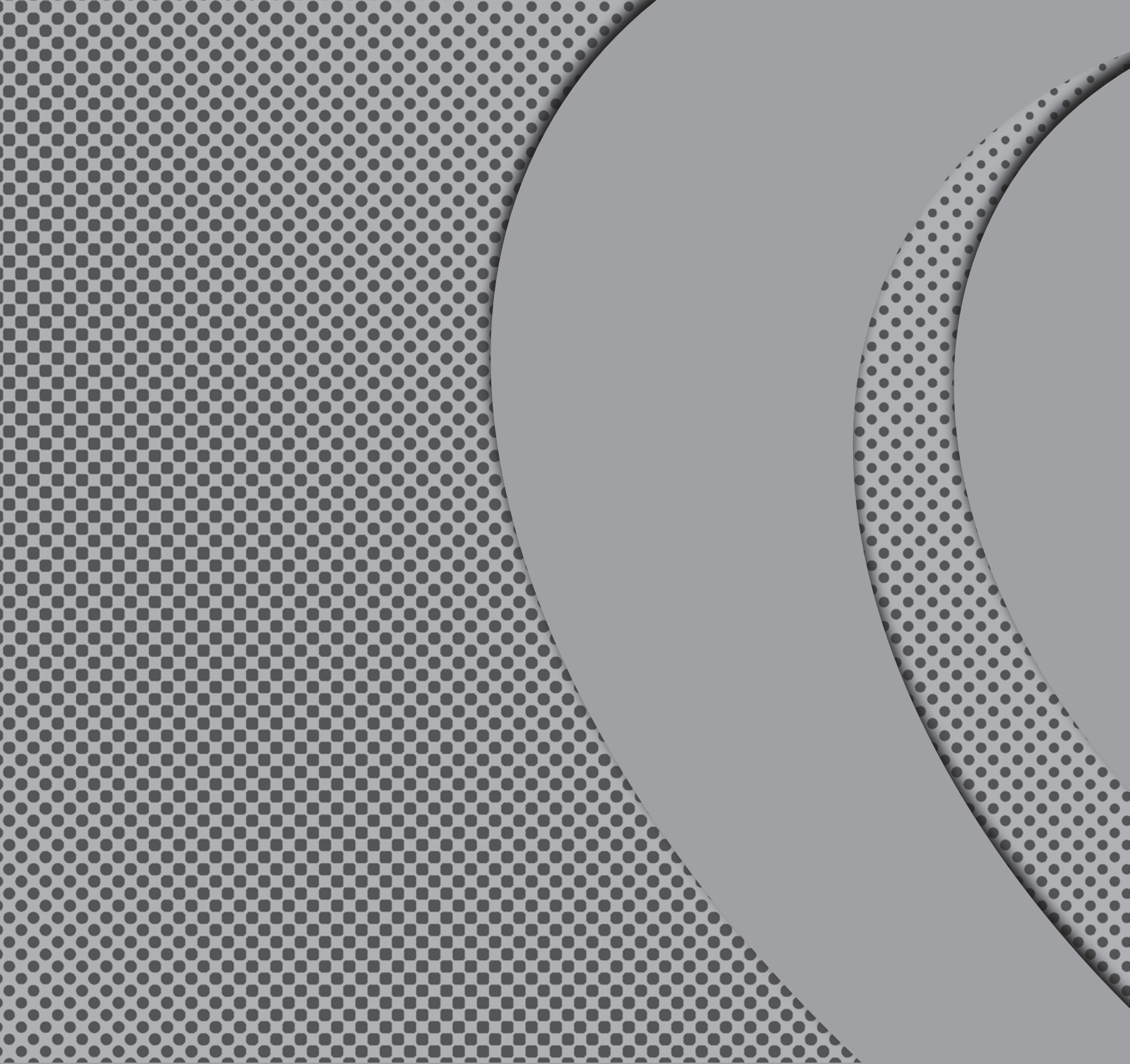


---

## Numerical Index:

---

|                 |                |                 |       |                |    |
|-----------------|----------------|-----------------|-------|----------------|----|
| OTG2700B .....  | 17, 53         | OTG11647B ..... | 25    | OTG11700 ..... | 45 |
| OTG2701B .....  | 16, 53         | OTG11648B ..... | 21    | OTG11702 ..... | 44 |
| OTG2747 .....   | 47             | OTG11649B ..... | 22    | OTG11703 ..... | 48 |
| OTG2748 .....   | 46             | OTG11650 .....  | 38    | OTG11704 ..... | 48 |
| OTG2782B .....  | 16, 17, 23, 52 | OTG11651 .....  | 8     | OTG11710 ..... | 5  |
| OTG2787B .....  | 19             | OTG11652 .....  | 9     | OTG11720 ..... | 50 |
| OTG2788B .....  | 14             | OTG11653 .....  | 4     | OTG11934 ..... | 42 |
| OTG3915B .....  | 23, 51         | OTG11655B ..... | 37    |                |    |
| OTG3916B .....  | 51             | OTG11657B ..... | 27    |                |    |
| OTG11610B ..... | 36             | OTG11668B ..... | 34-35 |                |    |
| OTG11611B ..... | 39             | OTG11671B ..... | 20    |                |    |
| OTG11612B ..... | 7              | OTG11675B ..... | 10    |                |    |
| OTG11613B ..... | 3              | OTG11676B ..... | 12    |                |    |
| OTG11615B ..... | 6, 11          | OTG11677B ..... | 30    |                |    |
| OTG11616B ..... | 6, 11          | OTG11686B ..... | 29    |                |    |
| OTG11617B ..... | 13             | OTG11690B ..... | 33    |                |    |
| OTG11618B ..... | 15             | OTG11691B ..... | 32    |                |    |
| OTG11631B ..... | 2              | OTG11692B ..... | 28    |                |    |
| OTG11633B ..... | 18             | OTG11693 .....  | 41    |                |    |
| OTG11641B ..... | 26             | OTG11694 .....  | 40    |                |    |
| OTG11642B ..... | 24             | OTG11696 .....  | 43    |                |    |
| OTG11643B ..... | 49             | OTG11697 .....  | 43    |                |    |
| OTG11646B ..... | 31             | OTG11699 .....  | 45    |                |    |



**Offices To Go™ displays in GLOBAL showrooms:**

Marlton, New Jersey

Cleveland, Ohio

Elkridge, Maryland

Minneapolis, Minnesota

Santa Fe Springs, California

Andover, Massachusetts

Dallas, Texas

Fremont, California

New Orleans, Louisiana

Seattle, Washington

Charlotte, North Carolina

Denver, Colorado

Glendale Heights, Illinois

New York, New York

Sunrise, Florida

Chicago, Illinois

Detroit, Michigan

Kansas City, Missouri

Phoenix, Arizona

St Louis, Missouri

Cincinnati, Ohio

Duluth, Georgia

Leetsdale, Pennsylvania

San Antonio, Texas

Tampa, Florida

Additional product available for presentation in many of GLOBAL's 30 showrooms throughout the United States. Please inquire with your local representative.

**Offices To Go - U.S.A.**

17 West Stow Road P.O. Box 562 Marlton, New Jersey U.S.A. 08053  
Tel (856) 596-3390 (800) 220-1900 Fax (856) 596-5684

**Visit us on the World Wide Web at [www.officestogousa.com](http://www.officestogousa.com)**

Offices throughout Canada and the United States.

A Division of Global - The Total Office

Visit the Global website at [www.globaltotaloffice.com](http://www.globaltotaloffice.com)

**Effective May 1, 2010**